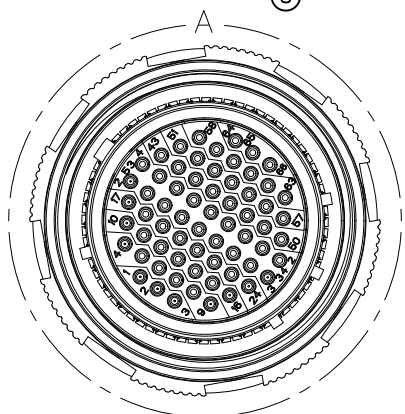
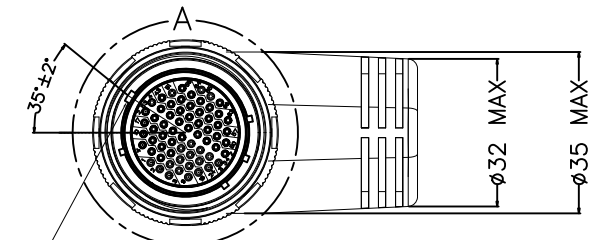
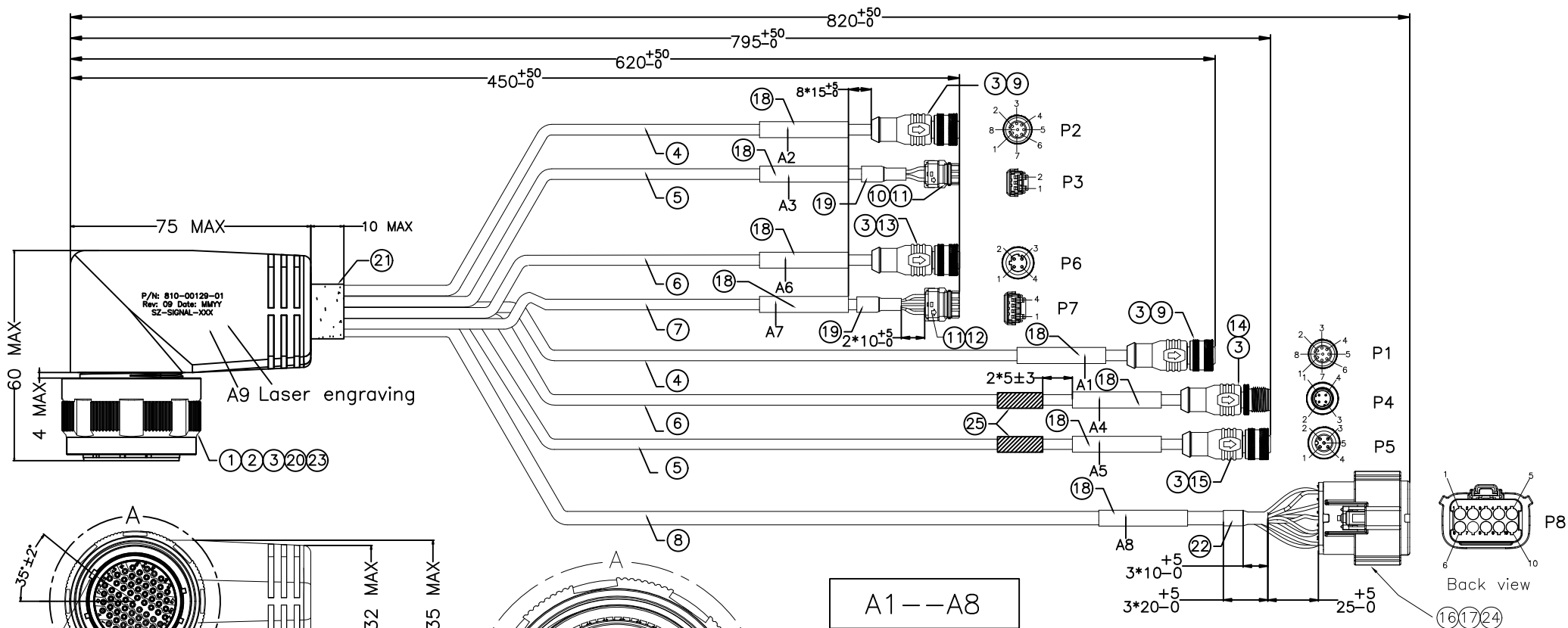


P/N: 810-00129-01
 Rev: 11 Date: MMY-----MMYY=MONTH YEAR
 SZ-SIGNAL-XXX-----SZ-SIGNAL-XXX(001,002.....)

Laser engraving content

REV	DESCRIPTION	DATE	APPROVED
S0	CREATED DRAWING	2019/09/18	YMX



A1--A8

- label specifications:
- 1.Material:Dragon
 - 2.White background and black text
 - 3.Maximum text height of 3mm
 - 4."Arial" font

MASTER KEY
 TESTING CONDITIONS:
 1. VOLTAGE: 300V DC/0.1S.
 2. INSULATION RESISTANCE: 100 Mohms min.
 3. CONDUCTIVE RESISTANCE: 5 Ohms max.
 4. 100% OPEN AND SHORT ELECTRICAL TEST.
 5. IPC A-620 CLASS 2.



*ALL MATERIALS ARE RoHS COMPLIANT.

FIRST ITEMS AND SIXTH TO EIGHTEENTH CONNECTION METHODS, LOOK AT THE ATTACHMENT

 SIGNAL [®] Shenzhen Signal Electronics Co., LTD		TITLE HARNESS, DOWN TRUNK, BE-MK2-KIT	
		SGN NO 940066-05-005	REV.
DRAWN BY	DATE	DWG NO SGN01026-700	SO
CHECKED BY	DATE	CUSTOMER 810-00129-01(REV 11)	
APPROVED BY	DATE	TOLERANCES ARE:	THIRD ANGLE PROJECTION
<small>THE INFORMATION CONTAINED IN THIS DRAWING IS THE SOLE PROPERTY OF SIGNAL COMPANY. ANY REPRODUCTION IN PART OR WHOLE WITHOUT THE WRITTEN PERMISSION OF SIGNAL COMPANY IS PROHIBITED.</small>		DECIMALES .x ±0.5 .xx ±0.20	ANGLES x.' ±2.0' .x' ±1.0'
		SIZE: A4	UNITS: mm
		SCALE:	SHEET: 1 OF 11

REV	DESCRIPTION	DATE	APPROVED
S0	CREATED DRAWING	2019/09/18	YMX



25	HT00066	Blue ultra thin heat shrinkable sleeve ϕ 6.0mm L=20mm	2	PCS	
24	N/A	MOLEX CIRCUIT PLUG MX150L,W-T-B	1	PCS	
23	WK00395	19F Aluminum alloy Shielding shell ϕ 29*L17mm (YDWK0239)	1	PCS	
22	HT00030-1	Heat shrinkable tube with glue Black ϕ 9.5mm	1	PCS	
21	HT00056	Heat shrinkable tube with glue Black ϕ 25.0mm	1	PCS	
20	CF00006	Double-sided conductive copper foil W25*0.06mm	1	PCS	
19	HT00020	Heat shrinkable tube with glue Black ϕ 6.4mm	2	PCS	
18	LB00007	Styrofoam label L*W=25*45mm	8	PCS	
17	TE00523	CRIMP terminal MX150L,18~22AWG, Female(MOLEX:194200010)	9	PCS	
16	HS00183	Housing, MX150L, 10PIN, Female(MOLEX:194180024)	1	PCS	
15	N/A	M12ACoding 5P/F connector (M12*1.0, with shield)	1	SET	
14	N/A	M12DCoding 4P/M connector (M12*1.0, with shield)	1	SET	
13	N/A	M12DCoding 4P/F connector (M12*1.0, with shield)	1	SET	
12	HS00173	housing,MIZU-P25,4PIN,Female,White(MOLEX:0521170410)	1	PCS	
11	TE00524	CRIMP terminal MIZU-P25,20~22AWG,Female(MOLEX:500398000)	6	PCS	
10	HS00175	Housing,MIZU-P25,2PIN,Female,Black(MOLEX:521170241)	1	PCS	
9	N/A	M12 A Coding 8P/F Connector (M12*1.0, with shield)	2	SET	
8	CA00713	UL2464 22AWG*9C+AEB Jacket Black PVC OD=7.5mm (YDCA0157)	1	PCS	
7	7	CA00795	UL2464 22AWG*4C+AEB Jacket Gray PVC OD=6.0mm (YDCA0156)	1	PCS
6	6	CA00712	UL20549 26AWG*2P+AEB Jacket Black PVC OD=5.0mm (YDCA0155)	2	PCS
5	5	CA00787	UL2464 22AWG*2C+AEB Jacket Gray PVC OD=5.0mm (YDCA0154)	2	PCS
4	4	CA00203	CAT5E SFTP 26AWG*4P Jacket Black PVC OD=6.0mm	2	PCS
3	3	PL00008	Black PVC 30P	90	g
2	2	PL00007	HD PE	45	g
1	1	CN00653	D38999, PLUG, 66Pin, A, Male, Souriau, D38999/26FF35PA	1	SET
ITEM	PART NO.	SPECIFICATION	Q'TY	UNIT	

 SIGNAL [®]		TITLE HARNESS, DOWN TRUNK, BE-MK2-KIT	
		SGN NO 940066-05-001	REV.
Shenzhen Signal Electronics Co., LTD		DWG NO SGN01026-700	S9
DRAWN BY		DATE	
CHECKED BY		DATE	CUSTOMER 810-00129-01(REV 11)
APPROVED BY		DATE	TOLERANCES ARE:
<small>THE INFORMATION CONTAINED IN THIS DRAWING IS THE SOLE PROPERTY OF SIGNAL COMPANY. ANY REPRODUCTION IN PART OR WHOLE WITHOUT THE WRITTEN PERMISSION OF SIGNAL COMPANY IS PROHIBITED.</small>		DECIMALES	THIRD ANGLE PROJECTION 
		ANGLES	SIZE: A4 UNITS: mm
		.x ±0.5 .xx ±0.20	x.' ±2.0' .x' ±1.0'

WIRE LIST

D38999	Color	PIN	Connector ID	Label content	Label ID
15	WHITE/BROWN	1	P1	ENC_ABS	A1
21	BROWN	2			
16	GREEN	3			
24	WHITE/GREEN	4			
8	WHITE/ORANGE	5			
9	ORANGE	6			
SHELL	DRAIN	SHELL			
25	ORNAGE	1	P2	ENC_TRACT1	A2
43	BROWN	2			
26	WHITE/ORANGE	3			
34	GREEN	4			
35	WHITE/GREEN	5			
44	WHITE/BROWN	7			
SHELL	DRAIN	SHELL			
52	BLACK	1	P3	ESTOP	A3
59	RED	2			
SHELL	DRAIN	-			
32	WHITE/ORANGE	1	P4	LIDAR_HRZ_ETH	A4
41	WHITE/GREEN	2			
33	ORANGE	3			
42	GREEN	4			
SHELL	DRAIN	SHELL			
49	RED	1	P5	LIDAR_HRZ_PWR	A5
50	BLACK	3			
SHELL	DRAIN	SHELL			

D38999	Color	PIN	Connector ID	Label content	Label ID
30	WHITE/ORANGE	1	P6	SP_ETH	A6
39	WHITE/GREEN	2			
31	ORANGE	3			
40	GREEN	4			
SHELL	DRAIN	SHELL			
56	RED	1	P7	START_PAUSE	A7
57	BLACK	2			
63	GREEN	3			
62	WHITE	4			
19	BLACK	1	P8	STEERING	A8
N/A	ITEM NO 24	2			
17	BLUE	3			
18	PURPLE	4			
6	RED	5			
5	WHITE	6			
10	BROWN	7			
12	GREEN	8			
11	YELLOW	9			
4	ORANGE	10			
SHELL	DRAIN	-	-	P/N: 810-00129-01 Rev:11 Date: MMY SZ-SIGNAL-XXX(001,002...)	A9

 SIGNAL [®] Shenzhen Signal Electronics Co., LTD		TITLE HARNESS, DOWN TRUNK, BE-MK2-KIT	
		SGN NO 940066-05-005	REV.
DRAWN BY	DATE	DWG NO SGN01026-700	SO
CHECKED BY	DATE	CUSTOMER 810-00129-01(REV 11)	
APPROVED BY	DATE	TOLERANCES ARE:	THIRD ANGLE PROJECTION 
<small>THE INFORMATION CONTAINED IN THIS DRAWING IS THE SOLE PROPERTY OF SIGNAL COMPANY. ANY REPRODUCTION IN PART OR WHOLE WITHOUT THE WRITTEN PERMISSION OF SIGNAL COMPANY IS PROHIBITED.</small>		DECIMALES .x ±0.5	ANGLES x.' ±2.0°
		.xx ±0.20	.x' ±1.0°
		SIZE: A4	UNITS: mm
		SCALE:	SHEET: 3 OF 11